

Protein Gel Stains

Highly sensitive, wide linear detection range

Protein Gel Stain Selection Guide

	Coomassie® Blue Fast Stain	eLuminol™ Protein Gel Stain	Phospho-Tag™ Phosphoprotein Gel Stain
Sensitivity	20 ng	0.5 ng	1 ng
Unit size	1 L (1X)	1 mL (1,000X)	500 mL (1X)
Time required	2 hr (standard) 20 min (microwave)	90 min (standard) 30 min (microwave)	4 hr (standard) 2 hr (microwave)
Detection method	colorimetric	fluorescent	fluorescent
MS spec. compatible	Yes	Yes	Yes

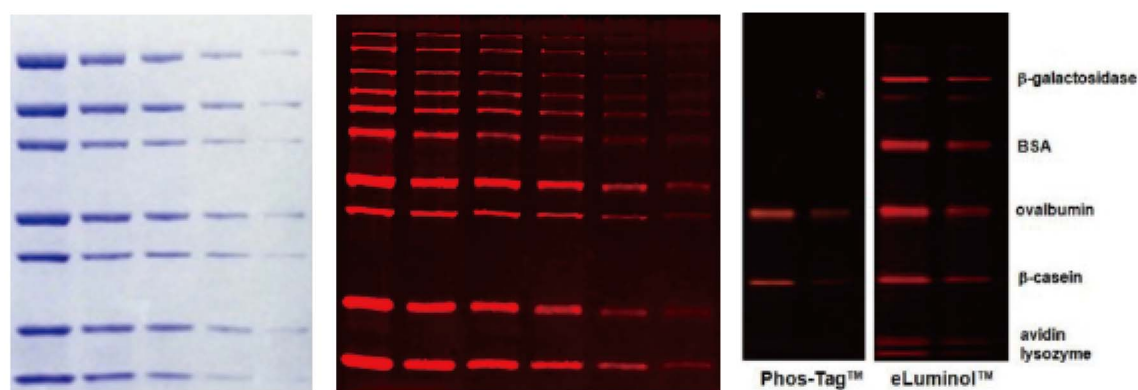


Figure 1. Gel stain results with Coomassie® Blue Fast Stain (left), eLuminol™ Protein Gel Stain (middle), and Phos-Tag™ Phosphoprotein Gel Stain, followed by eLuminol™ total protein stain (right). Two-fold serial dilutions (from left to right) of protein marker were separated via SDS-PAGE and then stained with above stains.

Cat. No.	Product Name	Description	Unit Size	Price
P001	Coomassie Blue Fast Stain	Colormetric protein gel stain	1 L	\$70
P003A	eLuminol Protein Gel Stain (1,000X)	Fluorescent protein gel stain	500 µL	\$70
P003B	eLuminol Protein Gel Stain (1,000X)	Fluorescent protein gel stain	1 mL	\$120
P005A	Phospho-Tag™ Phosphoprotein Gel Stain	Phosphoprotein gel stain	500 mL	\$180
P005B	Phospho-Tag™ Phosphoprotein Destain Solution	Phosphoprotein destain solution	500 mL	\$50