

DNA Gel Stains

High sensitive, non-toxic

DNA Gel Stain Selection Guide

	GreenView™	GreenView™ Plus	GreenView™ Ultra	RedView™
Sensitivity (dsDNA)	~2 ng	~0.2 ng	~60 pg	~1ng
Non-toxicity	✓	✓	✓	✓
Precast gel stain	✓	✓		✓
Post-gel stain			✓	
Gel band excision	✓	✓	✓	
Excitation source	Blue light/UV	Blue light/UV	Blue light/UV	UV
Emission filter	SYBR filter	SYBR filter	SYBR filter	EB filter

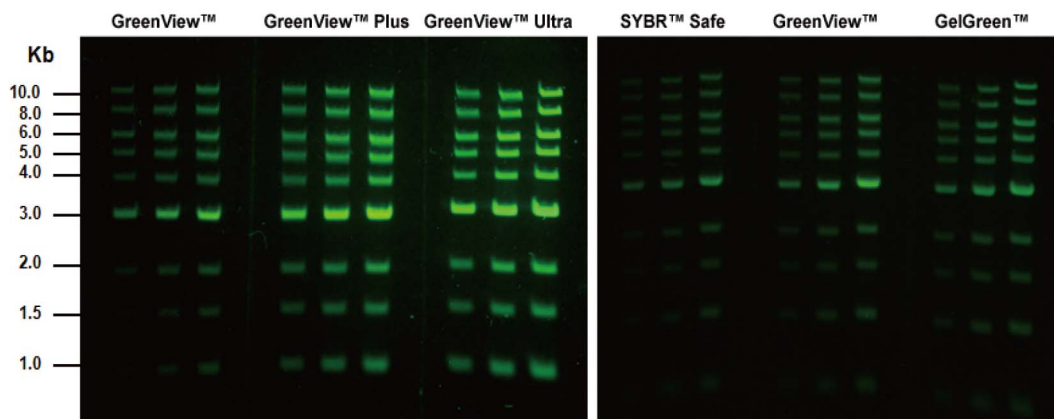


Figure 1. Gel stain results with GreenView™, GreenView™ Plus, and GreenView™ Ultra (Left), and comparison results with SYBR Safe™ and GelGreen™ (Right). Left: Two-fold serial dilutions of a 1 kb DNA ladder (NEB, Cat # N0468S) were loaded onto each gel in 3 lanes in the amounts of 25 ng, 50 ng and 100 ng (left to right), then post-stained with GreenView™, GreenView™ Plus, and GreenView™ Ultra. Right: Results show GreenView™ has similar sensitivity with SYBR Safe™ and GelGreen™, GreenView™ Plus and GreenView™ Ultra have much better sensitivity.

Cat. No.	Product Name	Ex/Em (nm)	Unit Siz	Price
N100	GreenView™ DNA Gel Stain	500/530 nm	500 µL	\$65
N101	GreenView™ Plus DNA Gel Stain	500/530 nm	500 µL	\$98
N103	GreenView™ Ultra DNA Gel Stain	500/530 nm	500 µL	\$148
N102	RedView™ DNA Gel Stain	300/600 nm	500 µL	\$98
D012	SafeGreen™ Loading Dye	500/530 nm	1 mL	\$48
D013	SafeRed™ Loading Dye	300/600 nm	1 mL	\$48