

## β-Actin Rabbit Polyclonal Antibody

### Catalog Number: AT001

#### Product Package

Cat. No.	Unit Size	Concentration	Storage
AT001	100 μL	1 mg/mL	Short term: 4°C Long term: -20°C Avoid freeze/thaw cycle

#### Introduction

β-Actin is one of six different actin isoforms that have been identified. The actin molecules found in cells of various species and tissues tend to be very similar in their immunological and physical properties. Therefore, antibodies against β-actin are useful as loading controls for Western Blotting. However it should be noted that levels of β-actin may not be stable in certain cells. For example, expression of β-actin in adipose tissue is very low and therefore it should not be used as loading control for these tissues.

**Storage Condition and Buffer:** 1 mg/ml in PBS, pH 7.4, containing 0.02% sodium azide and 50% glycerol. Store at +4°C short term. Store at -20°C long term. Avoid freeze/thaw cycle.

**Application:** WB IHC ICC/IF.

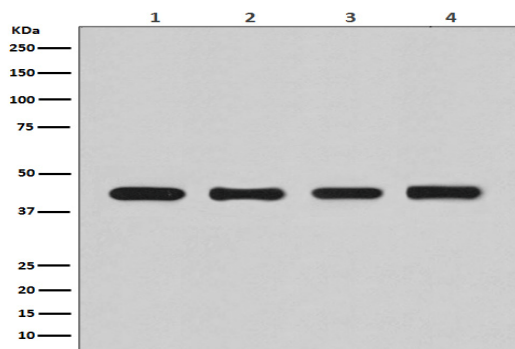
**Reactivity:** Human Mouse Rat.

**Dilution:** WB 1:3000~1:10000 IHC 1:50~1:200 ICC/IF 1:50~1:200.

**Purification:** Affinity-chromatography.

**Specificity:** beta Actin Antibody detects endogenous levels of total beta-Actin protein.

**Immunogen:** A synthesized peptide derived from human beta Actin.



Western blot analysis of beta Actin expression in (1)HeLa cell lysate; (2)Human fetal kidney lysate; (3) NIH/3T3 cell lysate; (4) PC-12 cell lysate.

**For Research Use Only.**